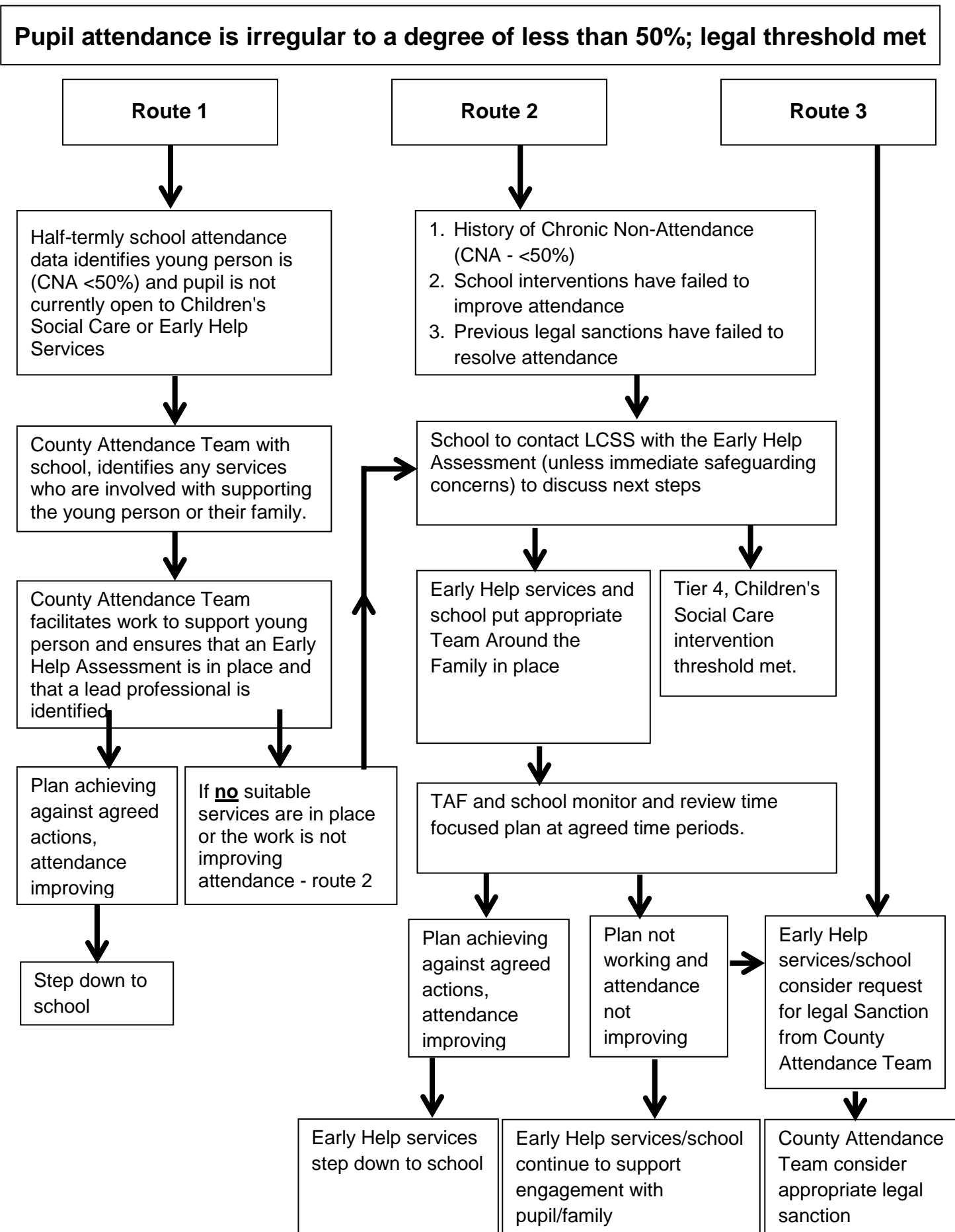


Early Help and Prevention Service

Chronic non-attendance flowchart (March 2019)



Top Tips - Supporting Chronic Non-attendance (March 2019)

The County Attendance Team will proactively identify children with attendance below 50% and work with schools to agree a way forward. If there is already a plan in place which is working, this will continue. Where there is not an effective plan, they will advocate and support an Early Help Assessment by school.

Contact LCSS when the EHA/TAF is not effective in realising an improvement. Where the school have been unable to engage the family in a meaningful way, contact should be made with the LCSS who can support next steps e.g. Early Help Targeted case work. However, if the child is at immediate risk of harm you should contact the MASH.



When contacting LCSS please remember; the more information you share, the more robust the decision-making process. Make sure you include information about:

- the actions you have taken
- what home factors are involved that you are aware of; e.g. separation anxiety, parental mental health, DV, substance misuse
- what school-based issues are involved; e.g. peer conflict, isolation, poor academic ability or discipline issues
- what has worked; have there been any external agencies involved
- what has been done that hasn't worked
- any patterns in the non-attendance or is this a sudden deterioration
- has a Parenting Contract meeting and/or Team Around the Family been involved
- is there is an Education Supervision Order in place; what is the plan and are there any results
- why you are concerned and confirmation you've discussed this with the family



You should have a chronology of your engagement with the family.



A lead professional from the Early Help services will work with the family for up to 6 months. They will identify all of the challenges the family have and work alongside them to take positive steps forward. At the end of the intervention, the majority of families will have made progress and a 'maintenance plan' will be agreed with them and the school.

This plan will include actions to sustain and continue improving attendance. In the most challenging cases, attendance may have improved but not to or above 50%. In these cases, families will still be stepped to school with a 'maintenance plan' that sustains and continues to improve attendance.